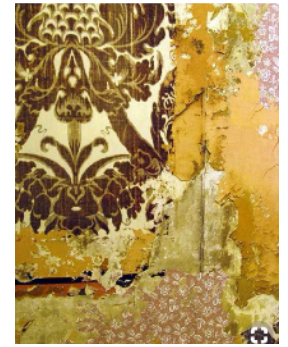


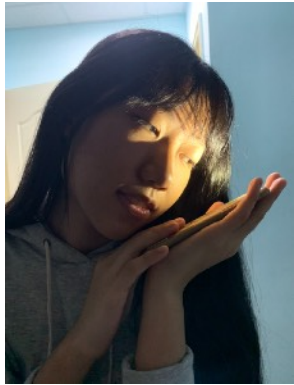
PRODUCING PROCESS

Three pieces done on wooden board are combined to form a series, including a self-portrait, a family photo, and a chameleon. I decided not to include the piece of door locked at last. For the whole series, I used charcoal pencil, which is one of the tools I'm most familiar with, to draw detailed people and animal, and also to show the contrast of light and darkness. Acrylic paints are used for the background and antique stain of the wallpapers.



Source: <https://www.pinterest.com/pin/95420085829196126/>

When choosing family photos, I happen to find one that I stand out among the rest of my family members. This include the feeling of divergence which I want to reveal. To increase the divergency more, I decide to turn my body around, facing back and hiding my face while all other family members are facing front.



What I want to show in this piece is that my phone is the source of light that take my mind off troubles. To start with the self-portrait, I first take a picture of me holding my phone, with the sense of treating it like a treasure. The light of the screen is not strong

enough, so I flip the phone over and open its flashlight, the contrast is then strong enough in the way I want. I used black acrylic for the background, and added white in some parts to distinguish my hair and the dark. I also sprayed some sparkles using tooth brush.

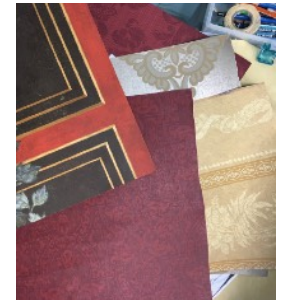


For this piece, only part of the chameleon's head is shown to let the composition be interesting. I also use black acrylic for background, and added water at the bottom to dilute it and create gradient, in order to create space.



For background, I drew inspiration from this textile designed by Gina Pierce. I tried representing the sense of 'shabby gentility' and 'broken home' through the same way of layering and peeling of wallpapers.

When choosing wallpapers, I select the colors and patterns that show dignity and gentility.



- * I use wooden board as canvas since it's stronger and more suitable to paste wallpapers on.
- * I didn't draw the door chain as I can find no more wooden boards to draw it on.



After pasting them on the wooden board, I give the wallpapers obsolete appearance and texture by ripping and staining dirt with acrylic using brush.